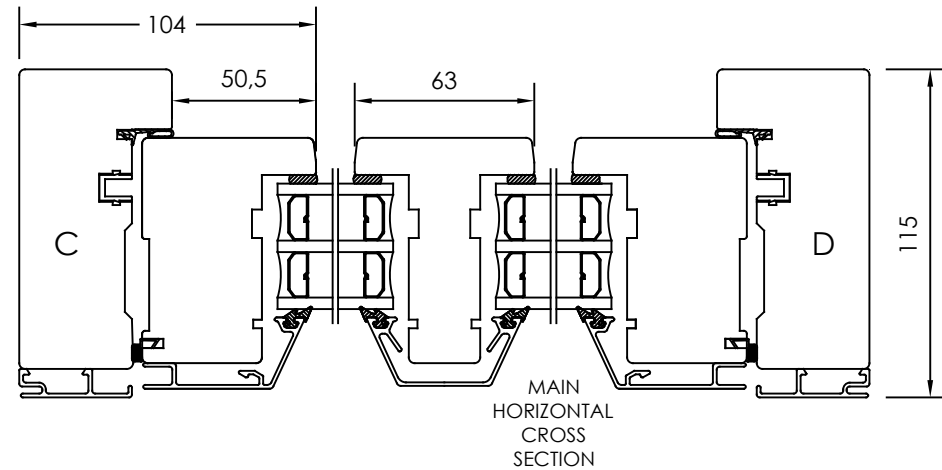
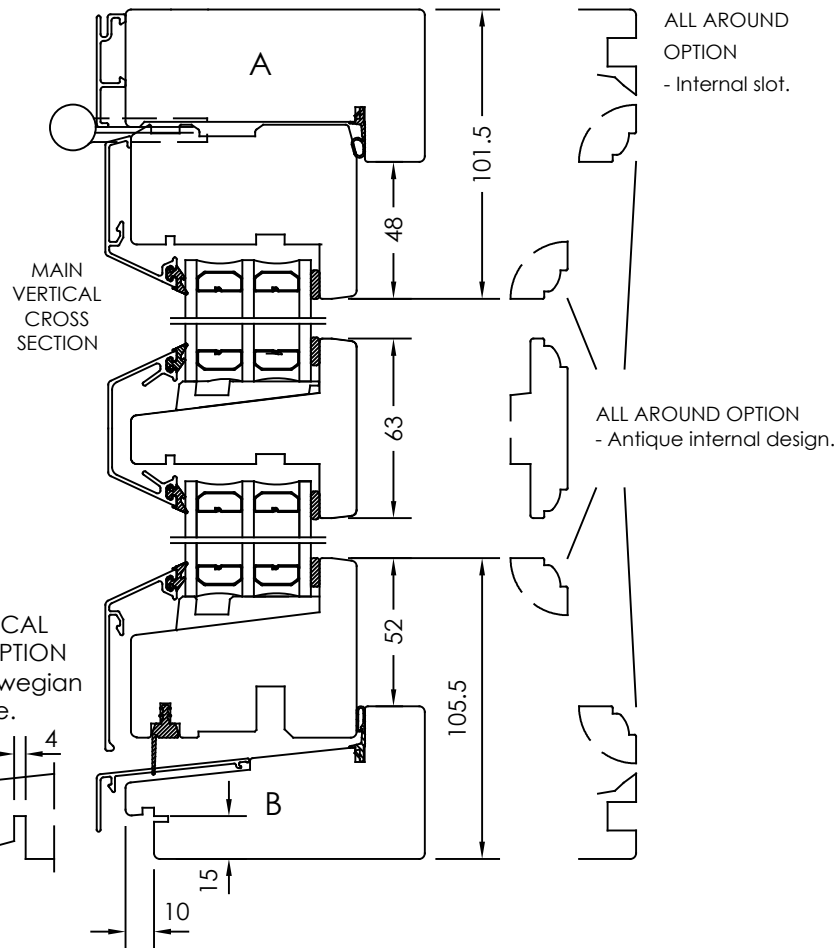


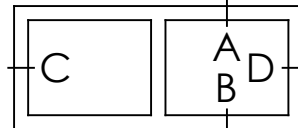
Rev	Description	Rev. by	Date

VERTICAL AND TOP OPTION
 - Profile for plastered fasades.
 Frame depth 117mm.



VERTICAL
CS OPTION
 - Norwegian
nose.

CS = CROSS SECTION



Designed by SH	Designed date 2019-05-14	Product Category Window Outward	Processing Code
Approved by	Approved date	Product Type Top Hung	Material
		Överkantshängt 3-glas, alu Top hung 3-glass, alu	Tolerances unless otherwise specified ISO 2768-1 m
		Article Number	View orientation
		Drawing Number 61-37-O201 E	Scale 1:1
			Revision (A)